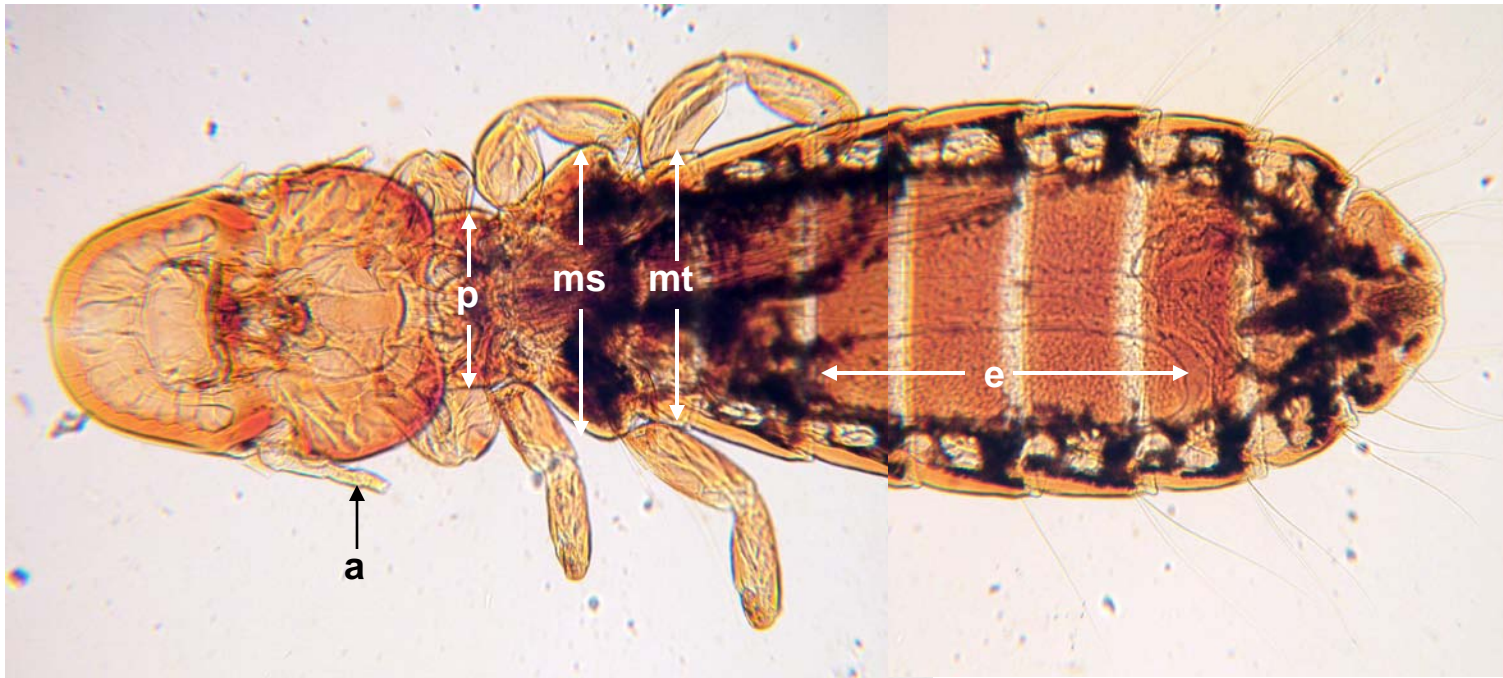
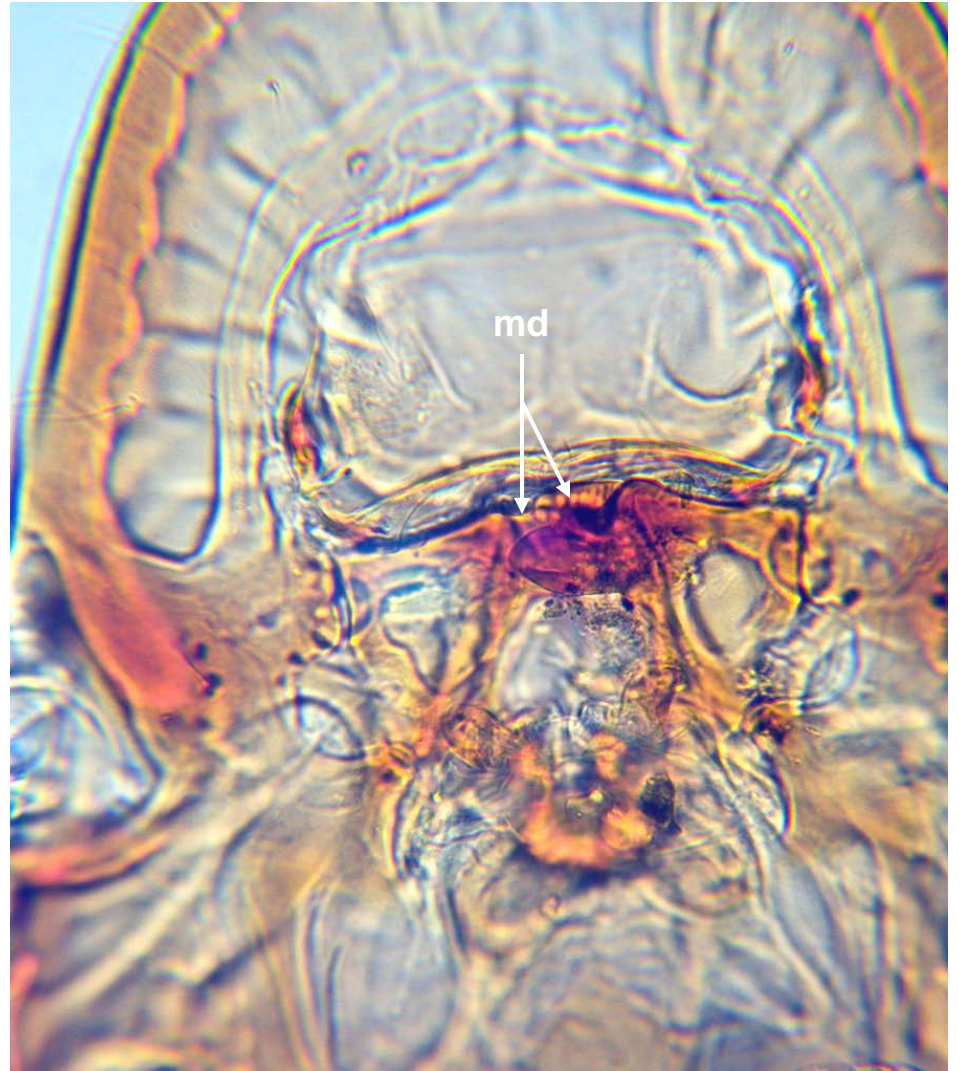
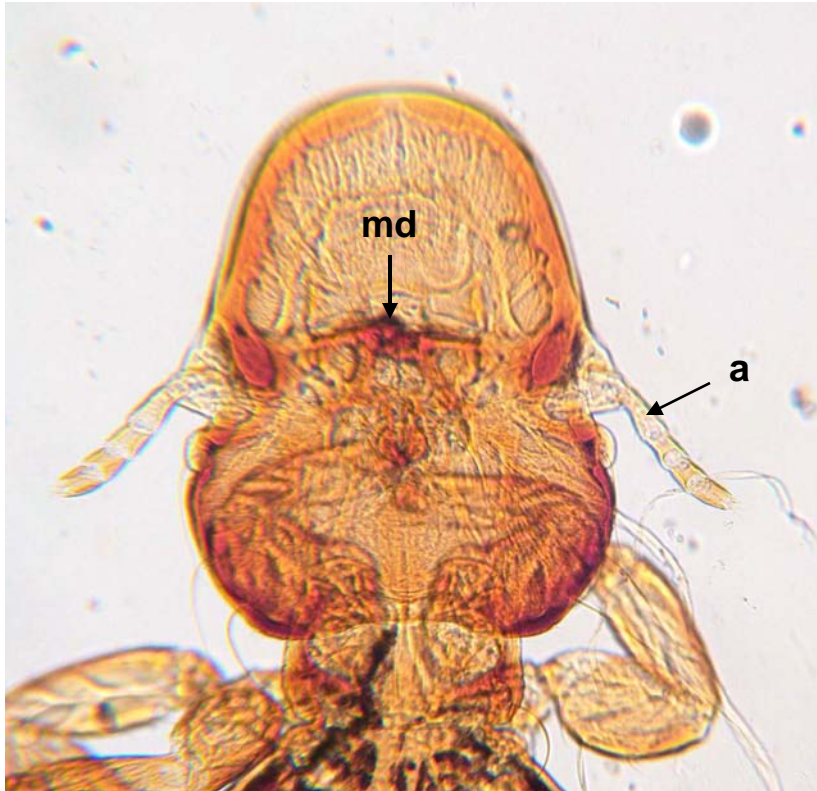


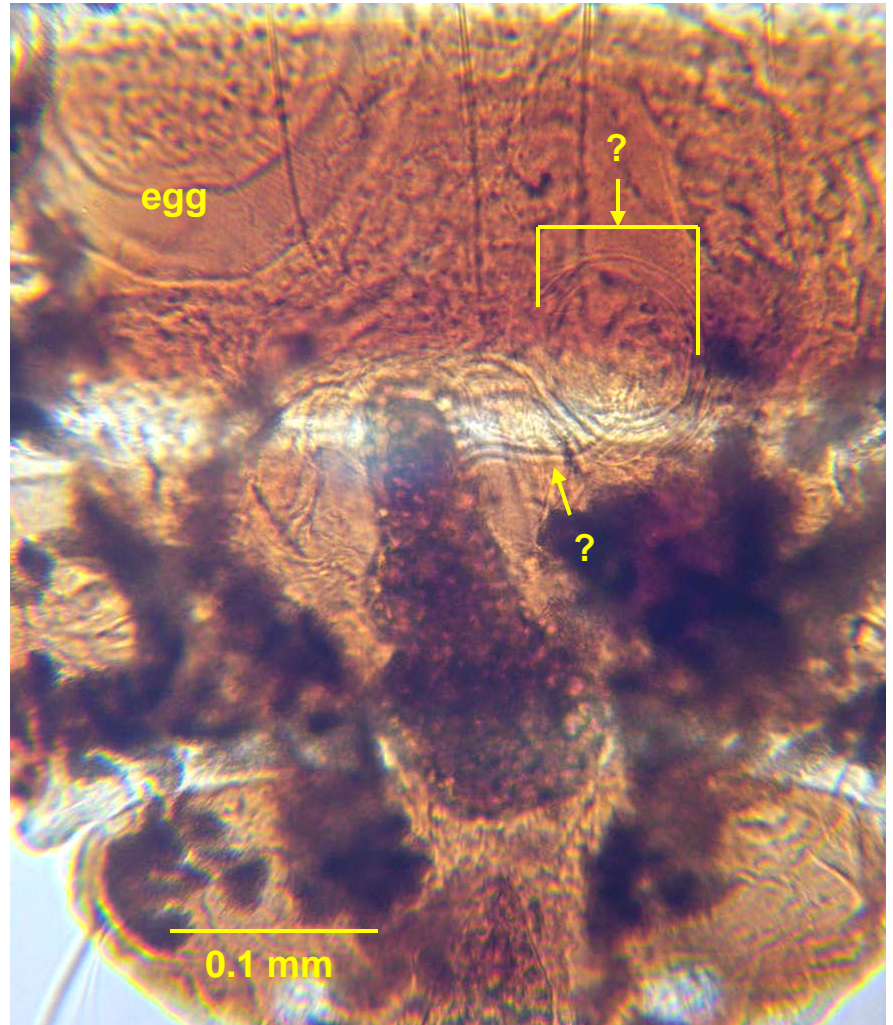
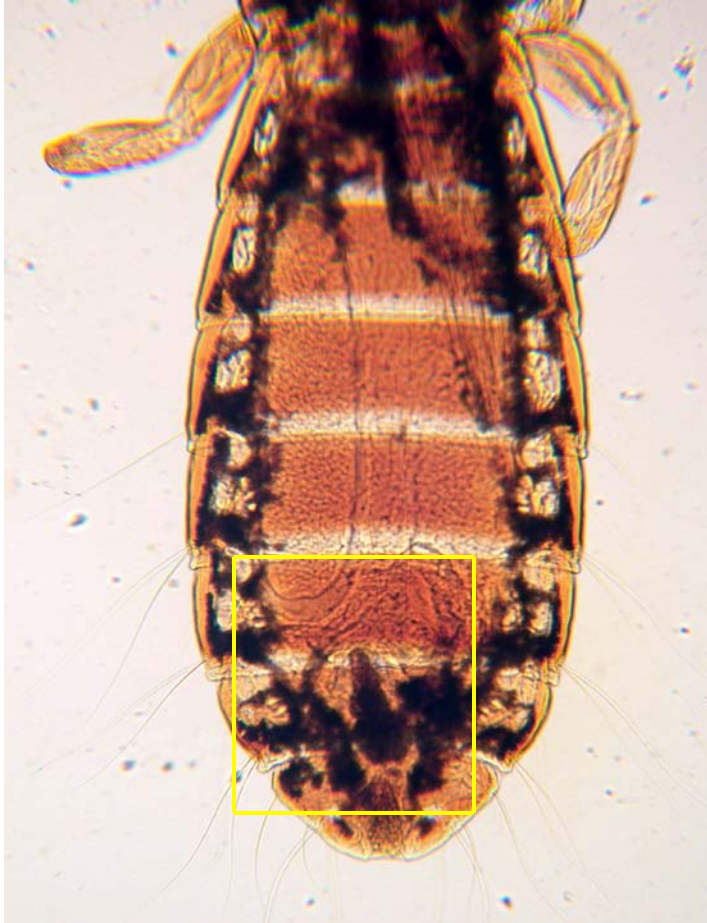
*Pegeeriella fulva* , female, entire. Legend: a, antenna; e, egg; p, prothorax; ms, mesothorax; mt, metathorax.  
Note: total body length = 2.26 mm.



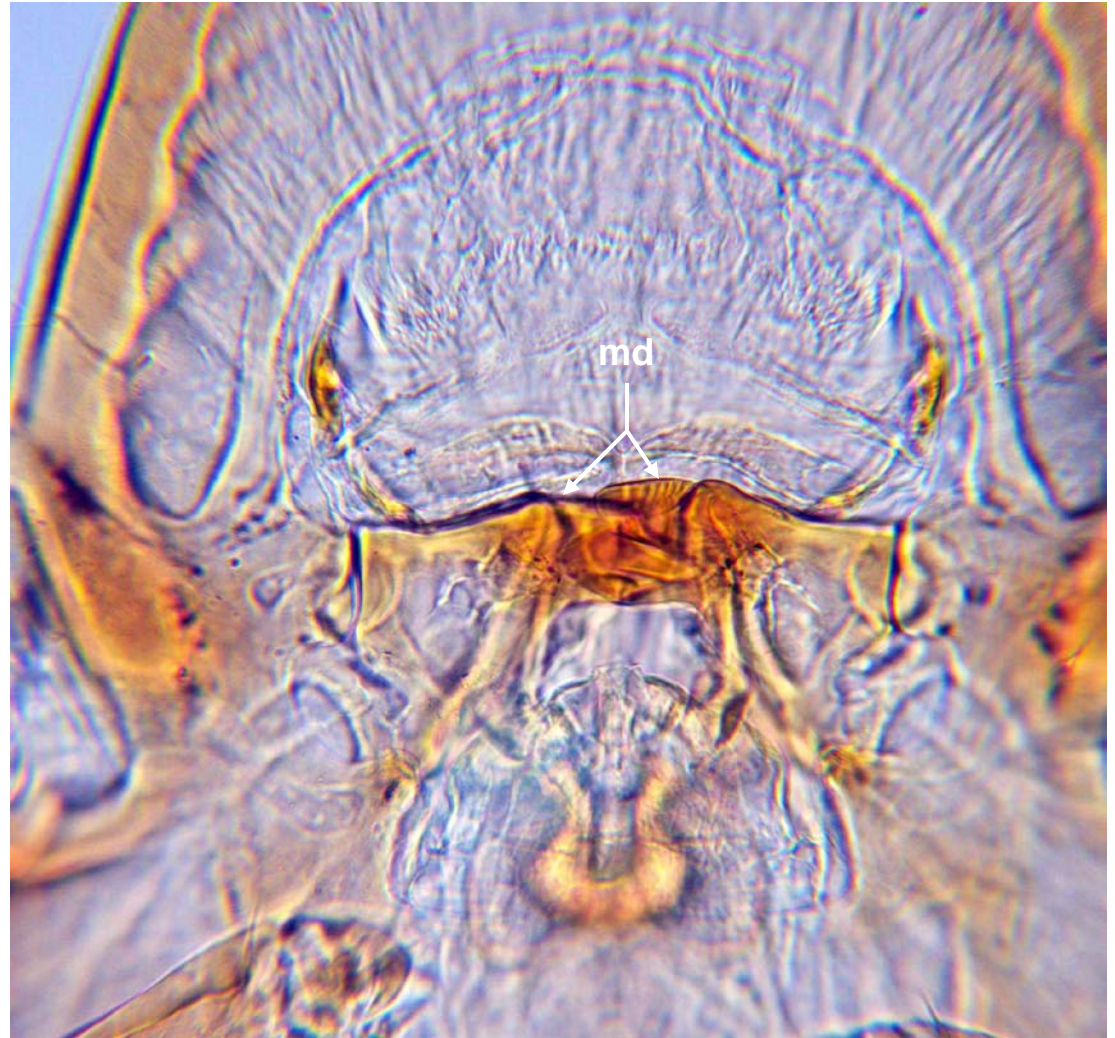
*P. fulva*, female. Legend: a, antenna; md, mandibles.



*P. fulva*, female, posterior. Box in A enlarged in B.  
(Circular structure?; tube? See: *Bruelia*, slide #4; *Philopterus*, slide #5).



*Pegeeriella fulva* , male. Legend: a, antenna; md, mandibles.



*P. fulva* : male; entire (A), genitalia (B). Box in A enlarged in B.

